



CHAIRMAN'S MESSAGE

Greetings from Seoul, Korea!

As we approach the end of 2025, I am filled with a deep sense of pride reflecting on the remarkable milestones achieved this year. Our collective efforts continue to strengthen regional cooperation and advance scientific knowledge to address the pressing environmental challenges of our time.

In the latter half of 2025, APAFRI successfully fulfilled the planned activities under the NIFoS Annual Contribution 2025. Collaborative research efforts focusing on the role and value of urban forests in Asia were reinforced through the 4th Asian Urban Forest Network (AUFN) Workshop for People and the Environment, held from 21 to 25 July 2025 in Penang, Malaysia. This was followed by the 4th International Mangrove Symposium 2025, convened from 25 to 26 August 2025 at the Novotel Kuala Lumpur City Centre, Malaysia. By opening the symposium to the public, APAFRI was able to broaden its outreach and visibility which subsequently generated interest from new institutions seeking membership.

I am pleased to extend a warm welcome to our new members, the Zhejiang Institute of Subtropical Crops (ZISC), China and the Institute of Biological Sciences, Universiti Malaya (IBS, UM), Malaysia. Their inclusion in the APAFRI network is expected to strengthen regional partnerships and encourage productive collaboration among forestry researchers.



Earlier this year, APAFRI completed the selection process for the second cycle of the APAFRI Research Fund (ARF), awarding support to three research proposals across diverse thematic areas. We anticipate that the ARF will continue to play an important role in supporting research activities, particularly for young and early-career scientists in the region.

Capacity-building remained a key focus of APAFRI with organising two online training programmes in August and November 2025. I would also like to acknowledge and thank the Indian Council of Forestry Research and Education (ICFRE) for its support of the Virtual Knowledge Sharing Workshop held in October 2025.

The 30th Executive Committee Meeting is scheduled for 28 January 2026 and will take place alongside the International Conference on Population and Conservation Genetics (ICPCG) in Coimbatore, India. I would like to convey my sincere appreciation to our member, the Institute of Forest Genetics and Tree Breeding (IFGTB-ICFRE), for kindly hosting this meeting. It is my hope that the discussions and exchanges during this gathering will further strengthen APAFRI's programmes and open new avenues for collaboration in the coming year.

None of these achievements would be possible without the unwavering support of our member institutions and partners. Every step of our 2025 journey was made possible by your participation. As we move forward, I encourage all members to

actively share ideas and pursue closer collaboration with APAFRI.

I must take this opportunity to congratulate Forest Research Institute Malaysia (FRIM) for obtaining the UNESCO World Heritage Site recognition in this past July. This milestone honours decades of dedication to Malaysia's natural heritage and excellence in forestry research. I also wish to acknowledge the

continuous and generous support FRIM has provided in hosting our Secretariat.

Finally, I wish you all a joyful festive season and look forward to another year of meaningful collaboration.

Dr. Kim, Yongkwan
Chairman, APAFRI
December 2025

ONLINE COURSE ON ANALYZE LIKE A PRO: SUPERCHARGE YOUR DATA ANALYSIS AND PRESENTATION 6, 13 and 21 August 2025



The selection of an appropriate statistical analysis depends on the nature of the data collected from experimental studies. This requires an understanding of basic experimental design conducted either in the field or under controlled laboratory conditions.

This course covered the use of the open-source statistical software R through demonstrations on performing statistical analyses and interpreting results. It equipped participants with essential analytical skills to address real-world problems especially in the forestry and forest products sector while enhancing their ability to generate appropriate figures and graphs.

The first session introduced participants to basic statistics, focusing on the scientific method and practical applications of the R program. Dr. Reuben highlighted the importance of starting research with a well-defined question and explained various types of biological data to guide the choice of statistical

methods. He also outlined the distinctions between descriptive and inferential statistics and concluded by presenting five statistical approaches applicable to forestry research.

In the second session, participants learned about hypotheses and experimental design, emphasizing that a well-informed hypothesis should be both quantifiable and testable. Dr. Reuben presented examples of how to turn questions into hypotheses and reiterated the need to identify the correct test for the data type. The session then continued with exploring normal distribution and hypothesis testing. This was followed by a review of the homework submitted by participants.

The final session focused on introducing the R program for data analysis with emphasis on normality tests, t-tests and correlation analysis. APAFRI thanks all participants for their commitment and constructive feedback throughout the course. We are pleased that the course has been beneficial to everyone involved.

4TH WORKSHOP OF ASIAN URBAN FORESTS NETWORKS (AUFN) FOR PEOPLE ENVIRONMENT

22-25 July 2025
Penang, Malaysia



The Asia Urban Forests Network (AUFN) was established by the National Institute of Forest Science (NIFoS), Republic of Korea in collaboration with the Northern Research Station of the USDA Forest Service to explore the value of urban forests in Asia.

The 1st AUFN workshop was organized from 10 to 12 January 2023 in Kuala Lumpur, Malaysia. This was followed by the 2nd AUFN workshop from 28 to 29 June 2023 in Seoul, Republic of Korea and the 3rd workshop from 24 to 25 April 2025 in Kuala Lumpur, Malaysia.

The 4th Workshop of AUFN for People & Environment was successfully organized from 21 to 25 July 2025 in Penang, Malaysia to consolidate the AUFN network and collect data on street trees and urban forests in Asia.

The workshop comprised five sessions covering the following focus area:

- Climate crisis and greenhouse gases monitoring in Asia
- High PM episodes and human health in Asia
- i-Tree Open Academy Asia program: Theory and analysis
- Statistics of street trees and urban forests in Asia
- i-Tree Open Academy Asia program: Regional application

i-Tree is a free software tool based on peer-reviewed research from the USDA Forest Service that provides urban and rural forestry analysis and benefits

assessment tools (<https://www.itreetools.org/about>). The i-Tree tools can help strengthen forest management efforts by quantifying forest structure and the environmental and economic benefits that trees provide. As part of the training, all participants conducted field surveys in teams at three sites to collect data for input into the i-Tree platform.

The participants from APAFRI Member institutions:

1. Dr. Rhomi Ardiansyah, University of Gadjah Mada (UGM), Indonesia

Urban Forests in Indonesia: Policy, Implementation, and Future Perspective

2. Dr. Ahmad Nazarudin, Forest Research Institute Malaysia (FRIM), Malaysia

A statistic of street trees in George Town, Penang, Malaysia

3. Ms. Hoang Nguyen Viet Hoa, Vietnamese Academy of Forest Sciences (VAFS), Vietnam

Urban Forest in Hanoi

A visit to the Penang Botanic Gardens was arranged with warm hospitality extended by the Penang Botanic Gardens Department which kindly provided a guided tour of the gardens. Established in 1884 by the British on the site of a former granite quarry, the gardens are located in a deep valley at the foot of 366-foot, jungle-clad hills and are bordered by evergreen tropical rainforest. During the visit, participants explored key attractions including the orchid house, bromeliad house, herbs garden and the herbarium gallery.

4TH INTERNATIONAL MANGROVE SYMPOSIUM 2025

25-26 August 2025
Kuala Lumpur, Malaysia



The 4th International Mangrove Symposium 2025 was successfully convened from 25 to 26 August 2025 at Novotel Kuala Lumpur City Centre, Malaysia. The event was jointly organized by National Institute of Forest Science (NiFoS), Republic of Korea and Asia Pacific Association of Forestry Research Institutions (APAFRI). The symposium was held in recognition of the urgent need for effective, science-based measures to protect and restore mangrove forests, ensuring their sustainability for both present and future generations.

The symposium had three main objectives

- Collaborative Network: Build an international network for mangrove and biodiversity research to support carbon neutrality and resilience.
- Advance Regional Cooperation: Support the Korea Forest Service in working with Asia-Pacific countries to expand mangrove research and restoration under its carbon neutrality policy.
- Promote Practical Knowledge Sharing: Share research findings and field-based strategies for effective mangrove restoration and management.

The two-day symposium comprised plenary sessions and a field excursion. It was attended by 33 participants representing China, Fiji, Indonesia, Japan, Korea, Malaysia, Philippines and Thailand reflecting a diverse mix of researchers, practitioners and policymakers from across the Asia-Pacific region.

Over the course of the symposium, twelve invited speakers shared their knowledge and expertise, contributing to a rich exchange of ideas and experiences. The programme was structured into three thematic sessions. The first session featured keynote speeches that provided a broad perspective on global and regional efforts to conserve mangrove ecosystems.

The second session focused on 'Scientific Insights into Mangrove Forests' where researchers presented findings on biodiversity, ecological functions and the impacts of climate change. The third session highlighted 'Practical Approaches in Mangrove Management' showcasing best practices, innovative methods and successful case studies from different countries.



The opening remarks was delivered by Dr. Kim Yongkwan, President of NiFoS and also the chairman of APAFRI. In his remarks, he emphasized that mangrove forests are among the most effective

nature-based solutions. He also highlighted that protecting mangroves creates a platform for cooperation that bringing together people, knowledge and shared goals. He expressed confidence that the symposium could initiate new regional projects and hoped it would encourage the exchange of ideas and the building of partnerships that extend well beyond the event.

Through the keynote presentation titled “Beyond Green Carbon: Regional Solutions for a Changing Climate,” Prof. Yowhan Son, University of Korea, emphasized the importance of sustainable forest management in addressing threats such as land-use change, climate change, biodiversity loss and population growth. He highlighted the critical role of mangrove forests in carbon sequestration and biodiversity while noting their vulnerability to climate change and sea-level rise.

Prof. Tadashi Kajita, Ryukyus University, highlighted the ecosystem services of mangroves and the severe threats they faced from aquaculture and climate change. In his presentation titled “Challenges in Assessing Mangrove Faunal Diversity with eDNA Metabarcoding”, he introduced eDNA metabarcoding as an efficient and standardized method to address gaps in faunal biodiversity studies, advancing this approach through international collaborations under the JSPS Core-to-Core program.

The presentation titles and speakers during the thematic presentation as follows:

- Blue Carbon Mangrove Research Gap: Problem and Assessment Progress
Prof. Dr. Yonvitner, IPB University, Indonesia
- Mangroves Restoration and its Carbon Sink Potential in Zhejiang Province, China
Prof. Chen Qiuxia, Institute of Subtropical Crops of Zhejiang Province, China
- Community physiology and phytochemistry of mangrove forests at their northern range margins
Prof. David Armitage, Okinawa Institute of Science and Technology, Japan
- Mangroves Without Borders: From Jeju’s Coasts to the Tropics

Dr. Bora Lee, National Institute of Forest Science (NIFoS), Korea

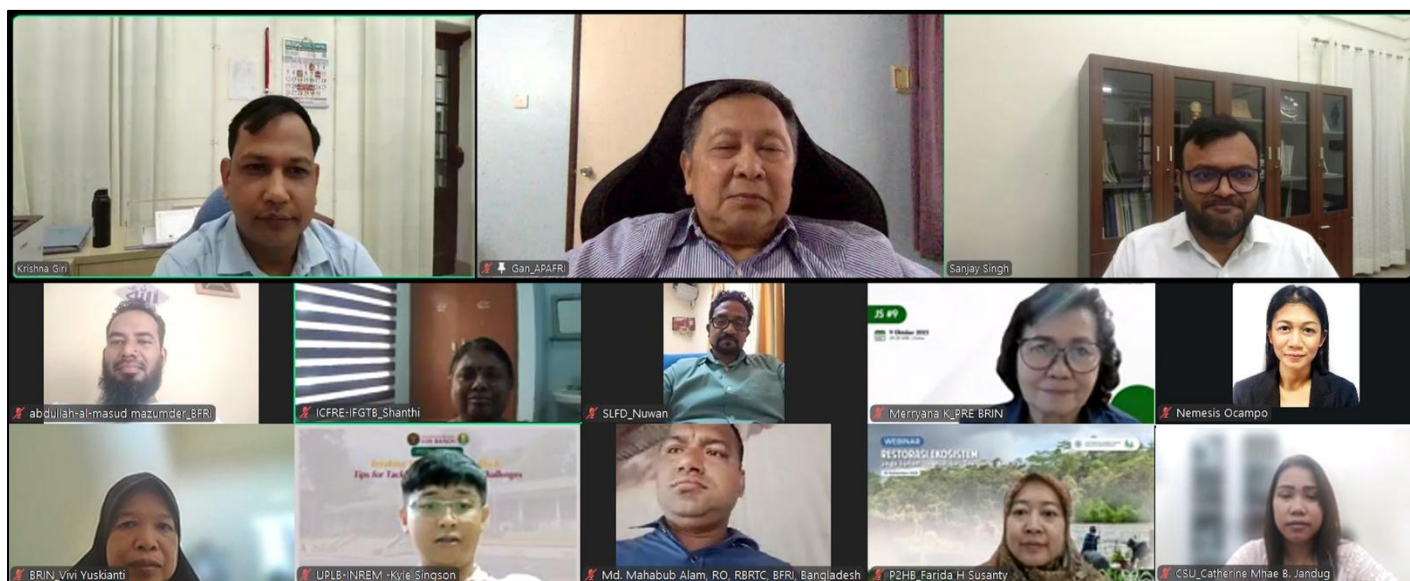
- Mangrove Blue Carbon of Southeast Asia: Overcoming the Present and Future Governance Challenges
Prof. Dixon T. Gevana, University of the Philippines Los Baños
- CIFOR-ICRAF Mangrove Knowledge-to-Action Initiatives
Dr. Himlal Baral, CIFOR-ICRAF, Indonesia
- Elevation Mapping Under Dense Mangrove Canopy Using Total Station Surveying for Inundation Frequency Assessment
Dr. Chakrit Na Takuathung, Kasetsart University, Thailand
- Advancing Mangrove Conservation and Restoration in Malaysia Through Research and Development
Mr. Tariq Mubarak Husin, Forest Research Institute Malaysia (FRIM)
- Practical Approaches in Mangrove Management
Ms. Marrynah Matami, Forest Department of Sabah, Malaysia
- Mangrove Forest Management in Fiji: Lessons Learnt from the Ministry of Fisheries and Forests
Mr. Apisai Rinamalo, Ministry of Fisheries and Forestry, Fiji

The field trip to Matang Mangrove Forest Reserve in Perak began with a briefing by the Larut Matang District Forest Officer. Participants learned that the reserve is recognized as Malaysia’s largest and most well-managed mangrove ecosystem covering over 40,000 hectares, employing sustainable practices such as replanting and thinning to maintain productivity and ecological balance.

The visit continued at the Kuala Sepetang Charcoal Factory, where participants observed a sustainable management. A river cruise along the mangroves of Kuala Sepetang rewarded participants with the chance to observe diverse mangrove species and fauna including birds and aquatic life. The cruise also highlighted sustainable local economic activities such as cockle farming and fishing which rely on the mangrove ecosystem.

APAFRI VIRTUAL KNOWLEDGE SHARING WORKSHOP (3/2025) INTEGRATED APPROACHES TO SUSTAINABLE LAND MANAGEMENT: PATHWAYS TO LAND DEGRADATION NEUTRALITY

14 October 2025



APAFRI Virtual Knowledge Sharing Workshop is a program initiated by APAFRI in 2023. It is a 2-hour online workshop to promote knowledge sharing among the scientists working in APAFRI member institutions.

Since organizing the first workshop from April 2023 until May 2025, APAFRI has successfully conducted four workshops covering various areas within the forestry field. These workshops have provided valuable platforms for knowledge sharing among researchers and practitioners.

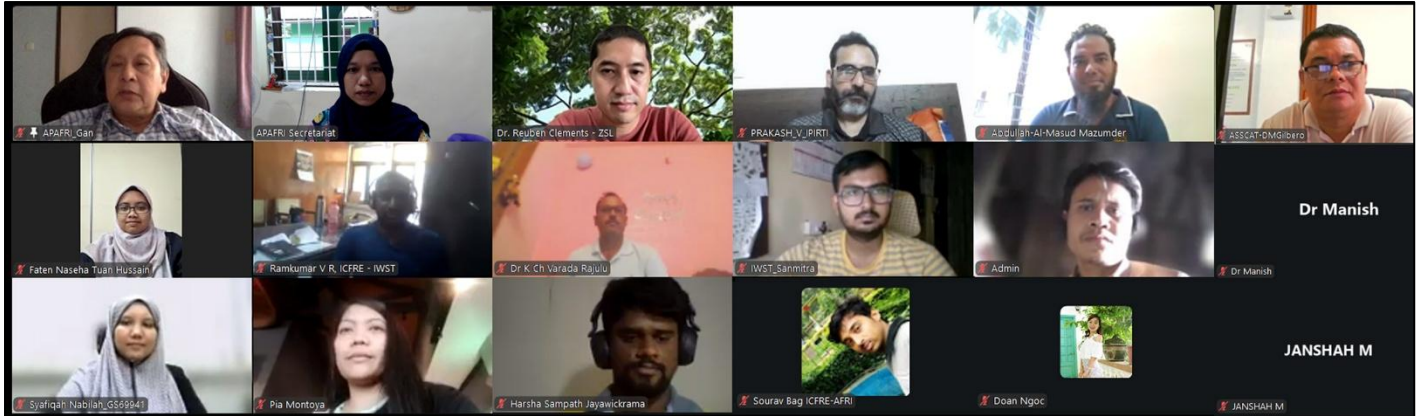
In collaboration with **Indian Council of Forestry Research and Education (ICFRE)**, APAFRI continues to expand these efforts by hosting another workshop on 'Integrated Approaches to Sustainable Land Management: Pathways to Land Degradation Neutrality' on 14 October 2025 to further strengthening regional cooperation and advancing sustainable forestry practices.

The knowledge sharing by both speakers was excellent and highly informative. In his presentation, **Dr. Sanjay Singh** introduced participants to the concept and importance of Sustainable Land Management (SLM) as a holistic and integrated approach to land use that balances ecological, economic, and social needs. He explained how

unsustainable land use practices, deforestation, and climate variability had contributed to widespread land degradation, posing serious threats to ecosystems, food security, and livelihoods. The presentation also provided an overview of the United Nations Convention to Combat Desertification's (UNCCD) Land Degradation Neutrality (LDN) framework, highlighting how SLM practices are central to achieving LDN targets by 2030.

Dr. Krishna Giri then delivered a case study presentation focusing on the practical application of Integrated Land Use Planning (ILUP) and community-driven restoration initiatives to address land degradation challenges in India. Using the Zabo practice from north-east India as an example, the presentation illustrated how participatory and multi-stakeholder approaches successfully rehabilitated degraded landscapes while generating socio-economic benefits for local communities. The presentation outlined the integration of ecological assessments, participatory planning and Nature-based Solutions (NbS) in restoring forest, agricultural and wasteland ecosystems. It also reflected on policy support, funding mechanisms and key lessons learned, offering replicable insights for achieving LDN through community-centred, integrated land management practices.

ONLINE COURSE ON GET FUNDING LIKE A PRO: SUPERCHARGE YOUR PROPOSAL WRITING SKILLS 5, 12 and 19 November 2025



The APAFRI Online Course for 2025 began with Write Like a Pro in April which focused on enhancing technical writing skills, followed by Analyse Like a Pro in August to introduce participants to statistical analysis using R. The programme concluded with Get Funding Like a Pro, a course designed to equip researchers with practical strategies for developing compelling and successful grant proposals.

In the first session, Dr. Reuben shared useful guidance on securing research funding covering a wide range of potential sources such as philanthropic foundations, university grants, government agencies and conservation-based organizations. Participants also discussed common challenges including identifying suitable funders, aligning research themes with grant requirements and estimating project costs accurately which often becomes a major barrier in proposal writing.

Clear and concise writing was strongly emphasized throughout the session. Key recommendations included breaking methodologies into subheadings, using Gantt charts for effective project planning, creating well-structured titles and adopting reference management software to improve citation management. Dr. Reuben also encouraged the use of academic databases such as Google Scholar, PubMed and Web of Science so that researchers can review current literature and confirm the originality of their research questions.

The second session focused on reviewing and improving research proposals for a funding competition. Participants discussed how proposals should be structured with emphasis on making objectives specific, measurable and research-oriented rather than just describing activities. They analyzed several proposals from different countries, providing feedback on how to improve titles, objectives, background sections and problem statements. Key recommendations included incorporating citations using specific metrics and focusing on clear research questions rather than general activities. The instructor highlighted that proposals need to demonstrate a clear research component and provide quantifiable outcomes to be competitive for funding.

The third session turned out to be highly interactive despite having only a handful of participants. Participants talked about what motivated them to join the course and shared their draft proposals, turning the session into a mini coaching clinic where they worked together to refine research titles and clarify study objectives. For the peer-review exercise, participants reviewed two proposals and determined which one should be recommended for funding. This final session concluded the APAFRI Online Course for 2025. We sincerely thank all participants over the years and trust that the courses have provided valuable and meaningful learning experiences.

THE FIFTH STEERING COMMITTEE MEETING OF SANFRI AND THE FOURTH EARLY CAREER ACADEMICS FORUM 3-5 December 2025 Kuala Lumpur, Malaysia



The Sino-ASEAN Network of Forestry Research Institutes (SANFRI) was initiated by the Asia-Pacific Network for Sustainable Forest Management and Rehabilitation (APFNet) with the aim to strengthen regional forestry research collaboration and promote sustainable forest management across ASEAN economies and China.

Since its official establishment in 2018, SANFRI has made significant progress including the convening of four Steering Committee meetings, three Early Career Academics Forums, the implementation of the APFNet Center for SANFRI Young Scholar Exchange and the establishment of the Visiting Scholar Program as well as the Small Research Grant Program.

The Fifth SANFRI Steering Committee Meeting and the Fourth Early Career Academics Forum were successfully convened from 3 to 5 December 2025. The events were co-organized by Asia-Pacific Network for Sustainable Forest Management and Rehabilitation (APFNet), Forest Research Institute Malaysia (FRIM) and Asia Pacific Association of

Forestry Research Institutions (APAFRI), with the assistance of the SANFRI Coordination Office (SCO) hosted in Yunnan Academy of Forestry and Grassland (YAFG).



The Steering Committee members were attended by eight representatives to review the implementation of SANFRI activities, discuss priorities for program development and explore collaboration opportunities among regional forestry research organisations.



Subsequently, the Fourth Early Career Academics Forum was convened featuring research presentations showcasing funded projects and scholar outcomes, interactive sessions for identifying cross-border collaboration opportunities and field visits to Malaysia's mangrove conservation sites. 24 members of the SANFRI Young Scholar Team were invited to participate in the forum.

On the next day, the delegates explored Matang Mangrove Forest Reserve in Kuala Sepetang, Perak on a scenic boat ride. They had an up-close look at how mangrove trees are carefully harvested and received explanations from the officers of the Perak Forestry Department. The visit also included a detailed briefing at the Matang Mangrove Eco Education Centre, where delegates learned about the ecological significance and conservation of mangroves, followed by a guided walk along the boardwalk.

The visit continued at the Kuala Sepetang Charcoal Factory. The factory demonstrated the conversion of mangrove wood into charcoal for cooking, industrial use and export highlighting how sustainable resource management supports both the industry and the local community. The delegates learnt a sustainable management system in which plots for mangrove

harvesting are allocated through balloting and license holders are responsible for replanting harvested areas.

Zoo Taiping is the only zoo located in the north of Peninsular Malaysia and was established in 1961. It now houses around 1500 animals from 140 species of mammals, birds, reptiles and fishes. The delegates visited the Taiping Night Safari where they saw nocturnal animals in their natural habitat. The guided tour offered interesting insights into the animals' nighttime behaviours and the importance of conservation. The visit was such an exciting and educational experience.

During the journey back from Taiping to Kuala Lumpur, the delegates stopped for a brief visit at the Antong Coffee Mill in Taiping. Established in 1933, the mill is Malaysia's oldest operating coffee mill renowned for its traditional wood-fired roasting methods that create a rich, aromatic flavor. The mill preserves nearly a century of coffee-making heritage offering visitors a glimpse into the roasting process and the chance to learn about the history of coffee in Malaysia. The delegates had the opportunity to observe the coffee-making process and taste local brews.



SEMINAR ON ESTABLISHING A TIMBER IDENTIFICATION FRAMEWORK FOR LEGAL TIMBER TRADE

28 July 2025

Incheon, Republic of Korea



The seminar was hosted by National Institute of Forest Science (NIFOS) as part of the Asia-Pacific Economic Cooperation (APEC) and the Experts Group on Illegal Logging and Associated Trade (EGILAT): Senior Officials Meeting 3 (SOM3).

The program was a one-day event on capacity building in enforcement and promotes legal timber trade practices through exchanges of information, views, technologies and best practices. The program comprised of dialogues and a mini-exhibition. The dialogues included several sessions with varying dynamics such as expert presentations, panel discussions, case studies, demonstration and more to maximize learning and retention. 21 APEC member economies were invited to participate in this program.

The objectives of the seminar were to:

- (i) Provide a networking platform and inculcate relevant stakeholders (interdisciplinary) engagement and coordination to promote legal timber and associated trade through understanding of its significance.
- (ii) Exchange of views, information, experiences, and analyses based on real-time studies, best practices, innovations and relevant matters on promoting legal timber through stakeholder collaboration, within APEC economies.
- (iii) Outline potential collaboration/ concrete steps/ actions (approaches) towards enhancing APEC cross-fora and stakeholders to promote legal timber and associated trade in the Asia Pacific region.

The welcoming address was delivered by the host of APEC 2025, Dr. Myung-gil Kim, Director General of NIFoS. In his remarks, he highlighted that since October 2018, the Republic of Korea has been operating the “Legal Timber Trade Promotion System,” which currently manages and supervises 12 categories of products including lumber, plywood, and pellets. In this regard, NIFoS has been dedicated to building timber identification databases, developing AI-driven systems for automatic timber identification and utilizing DNA markers to estimate the origin of timber products. The Korean government and the Korea Forestry Promotion Institute have established and maintain reporting systems to ensure legal timber trade, with ongoing monitoring of the distribution and trade of timber products nationwide.

This seminar comprised of four sessions, each orchestrated by distinguished chairs which were Ms. Hong Chin Chin (Malaysian Anti-Corruption Commission), Mr. Khairul Anwar (Malaysian Timber Council) and Dr. Ratih Damayanti (National Research and Innovation Agency, Indonesia). The dialogue and exhibition succeeded in bringing together diverse disciplines to exchange knowledge, showcase technology and lay out clear, coordinated steps toward enhanced legal timber trade enforcement across the APEC region.

This seminar was part of the outlined activities under NIFoS’s contribution to APAFRI in 2025.

(Adapted from project implementation report by NIFoS)

4th INTERNATIONAL WORKSHOP ON THE PEATLAND RESTORATION FOR SUSTAINABLE DEVELOPMENT

1-3 September 2025

Sumatra, Indonesia



The event commenced with the Inter-institutional Research Capacity Building Workshop at the conference room of the College of Agriculture, Indralaya Campus, Sriwijaya University, Indonesia. The workshop featured presentations that highlighted the sharing of field survey results on South Sumatra peatland restoration as well as soil gas flux measurements, providing participants with valuable insights into ongoing research efforts.

On the following day, the 4th International Joint Workshop was held at the Banquet Hall of Arista Palembang Hotel, South Sumatra Province, Indonesia.

The opening address was delivered by Director Cheol-ho Jeong who emphasized that the symposium provided a meaningful platform for international cooperation, bringing together stakeholders from Korea and Indonesia to discuss peatland restoration and climate change response. He highlighted the achievements of joint research and pilot projects between Korea and Indonesia and noted their contribution to expanding international collaboration and promoting sustainable peatland management.

The first keynote speech was delivered by Director Edward of the South Sumatra Governor's Office, focusing on South Sumatra peatland management achievements and future international cooperation. He outlined the scale and ecological value of peatlands in South Sumatra and highlighted major

challenges, including recent degradation and wildfires. He also noted that the institutional foundation for peatland restoration and management is being strengthened at the provincial government level.

The second keynote speech was delivered by Official Hyeong-gyun Kim from the Korea Forest Service, covering Korea's peatland restoration projects and directions for international cooperation. He presented case examples of restoration projects applying the 3R approach (Rewetting, Revegetation, Revitalization) in Indonesia's Jambi region, drawing on Korea's large-scale forest afforestation experience in the 1980s.

The final keynote speech was delivered by UNSRI Vice President Rujito, focusing on peatland restoration achievements from an Indonesian perspective and the direction of community cooperation. He shared collaboration highlights such as the conclusion of an MOU with NIFoS, field surveys, and joint seminars. He also acknowledged that the technical and policy support from the Korea Forest Service and NIFoS had been practically valuable for local research and policy formulation, expressing gratitude for their assistance.

This event was part of the outlined activities under NIFoS's contribution to APAFRI in 2025.

(Adapted from project implementation report by NIFoS)

[UPCOMING EVENT]

30TH MEETING OF APAFRI EXECUTIVE COMMITTEE

28 January 2026
Coimbatore, India

With the recommendation of the APAFRI Chair, the 30th Meeting of APAFRI Executive Committee will be conducted physically on 28 January 2026 in conjunction with the International Conference on Population and Conservation Genetic (ICPCG) in Coimbatore, India.

The meeting agenda includes a detailed presentation of the progress report on APAFRI's activities and programmes implemented in 2025, a review of the financial report for the year 2025, as well as a discussion and endorsement of the proposed work plan for 2026.

The ICPCG conference (<https://icpcgindia2026.in/>) is hosted by Indian Council of Forestry Research and Education (ICFRE) - Institute of Forest Genetics and Tree Breeding, Coimbatore, India under the aegis of IUFRO Unit 2.04.01 - Population, ecological and conservation genetics and Asia Pacific Forest Genetic Resources Programme (APFORGEN).

The conference will primarily focus on the population dynamics of forest tree genetic resources in the context of countering ecological and climatic challenges.

Welcome Our New Members

Zhejiang Institute of Subtropical Crops (ZISC)

Ouhai District, Wenzhou City, Zhejiang Province, China
www.zjzcs.cn

Zhejiang Institute of Subtropical Crops (ZISC) was established in 1962 and focuses on the research and utilization of economic plant resources and on ecological environment construction in China's subtropical regions.

Institute of Biological Sciences, Universiti Malaya (ISB,UM)

Faculty of Science, Kuala Lumpur, Malaysia
<https://biology.um.edu.my/>

The Institute of Biological Sciences (ISB) of Universiti Malaya (UM) is a leading centre for education and research in the biological sciences. Established within the Faculty of Science of Malaysia's oldest university, IBS combines advanced scientific and technological approaches with a strong focus on understanding and preserving the nation's rich biodiversity and ecosystems.

APAFRI RESEARCH FUND (ARF)

APAFRI Research Fund (ARF) was established in 2024 with the aim to support research and development as well as capacity-building activities in the field of forestry and forest products.

The fund is open to young researchers (under 40 years old), with a funding limit of MYR 45,000 (approximately USD 10,000) per project. It is strictly

opened only for research personnel/officers from active member institutions of APAFRI with capabilities and facilities to conduct the R&D studies funded under this initiative.

The project under ARF shall be carried out within the institutions where the project members are based and duration can be between 6 and 24 months.

ARF PROJECTS 2024		
Project Number	PD ARF 2024/1	PD ARF 2024/2
Project Title	Trees, Traditions, and Tomorrow: A Socio-Ecological Look at Village Common Forests in Khagrachari District of Bangladesh	Hot oil treatment for improved utilization of secondary woods
Project Leader	Mr Jime Roy	Mr Anandu Reghu
Research Organization	Bangladesh Forest Research Institute (BFRI), Bangladesh	Institute of Wood Science & Technology (IWST), India
Project Duration (months)	24	24
Project Start Date	01/01/2025	01/07/2024
Project End Date	31/12/2026	30/06/2026
Total Funding Approved (RM)	44,970	37,600

ARF PROJECTS 2025			
Project Number	PD ARF 2025/1	PD ARF 2025/2	PD ARF 2025/3
Project Title	Integrating Conservation and Community Development Through Biodiversity-Based Ecotourism in Post-Eruption Mount Merapi: Ecosystem Dynamics and Community Impact	Unveiling the Potential of Soil Mycoflora and Actinomycetes as Biocontrol Agents against <i>Ceratocystis manginecans</i> in <i>Eucalyptus pellita</i>	Assessment of Trajectories of Carbon stock and Socio-Ecological System of Mangrove Forest fragments in Human-dominated landscapes in Sri Lanka
Project Leader	Dr. Rhomi Ardiansyah	Dr. Go Wen Ze	Mr. Harsha Sampath Jayawickrama
Research Organization	Faculty of Forestry, Universitas Gadjah Mada, Indonesia	Faculty of Tropical Forestry, Universiti Malaysia Sabah	Department of Forest Conservation, Sri Lanka
Project Duration (months)	18	24	20
Project Start Date	01/10/2025	01/10/2025	01/11/2025
Project End Date	31/03/2027	30/9/2027	30/6/2027
Total Funding Approved (RM)	39,324	34,498	40,862

FOREST RESEARCH INSTITUTE MALAYSIA inscribed as a UNESCO World Heritage Site

11 July 2025



Forest Research Institute Malaysia (FRIM) is internationally recognised as a leading centre for research in tropical forestry. On 11 July 2025, FRIM Forest Park Selangor (FRIM FPS) was inscribed as a UNESCO World Heritage Site during the 47th Session of the UNESCO World Heritage Committee held in Paris.

FRIM FPS is a man-made tropical rainforest established on former tin-mining land beginning in the 1920s. Through systematic reforestation, the once-degraded landscape was gradually transformed into a mature lowland tropical forest.

Today, the site comprises research facilities, residential and service buildings, water bodies and an extensive network of trails. It stands as an early and successful model of ecological restoration and sustainable land rehabilitation.

The buildings that housing the APAFRI Secretariat also holds historical significance. FRIM has hosted the Secretariat since 2001, marking nearly 24 years of continuous support. In 2010, under the leadership of Dato' Abd Latif Mohmod, FRIM refurbished two units of former staff quarters to accommodate the Secretariat, providing fully equipped office facilities and utilities.

These semi-detached houses which were located along Jelutong road were constructed in the early 1930s. Built of brick and lime, each unit features an internal courtyard with living and dining areas at the front portion of the house, bedrooms are on the side of the courtyard and a kitchen at the rear. Originally intended to house mid-level technical and clerical staff, the buildings reflect the early institutional heritage of FRIM and continue to represent an important part of the site's historical landscape.



ACTIVITIES ORGANIZED/ PARTICIPATED BY APAFRI IN 2025

No.	Date	Activity	Venue	Notes
1	13 February 2025	2nd Meeting of the Collaborative Research under Asia Urban Forests Network (AUFN)	Online Meeting	AUFN
2	26 February 2025	APAFRI VIRTUAL KNOWLEDGE SHARING WORKSHOP (1/2025) Management of Plant Diseases in Sustaining Forest Health	Online Meeting	APAFRI
3	18 March 2025	Twenty-Ninth APAFRI Executive Committee Meeting	Online Meeting	APAFRI
4	16, 23 April and 7 May 2025	APAFRI ONLINE COURSE Write Like a Pro: Supercharge Your Scientific Writing	Online Meeting	APAFRI & NIFoS
5	15 May 2025	APAFRI VIRTUAL KNOWLEDGE SHARING WORKSHOP (2/2025) DNA Profiling and Barcoding in Timber Forensics in Asia Pacific Region	Online Meeting	APAFRI
6	19-23 May 2025	APFORGEN's Annual meeting and International Day for Biodiversity 2025 Symposium	Los Banos, Philippines	2024 NIFoS contribution
7	22-25 July 2025	4th Workshop of Asian Urban Forests Networks (AUFN) for People Environment	Penang, Malaysia	2025 NIFoS contribution
8	28 July 2025	Seminar on Establishing a Timber Identification Framework for Legal Timber Trade	Incheon, Republic of Korea	2025 NIFoS contribution
9	6, 13 and 21 August 2025	APAFRI ONLINE COURSE Analyze Like a Pro: Supercharge Your Data Analysis and Presentation	Online Meeting	APAFRI & NIFoS
10	1-3 September 2025	4th International Workshop on the Peatland Restoration for Sustainable Development	Sumatra, Indonesia	2025 NIFoS contribution
11	25-26 August 2025	4th International Mangrove Symposium 2025	Kuala Lumpur, Malaysia	2025 NIFoS contribution
12	14 October 2025	APAFRI VIRTUAL KNOWLEDGE SHARING WORKSHOP (3/2025) Integrated Approaches to Sustainable Land Management: Pathways to Land Degradation Neutrality	Online Meeting	APAFRI
13	5, 12 and 19 November 2025	APAFRI ONLINE COURSE Get Funding Like a Pro: Supercharge Your Proposal Writing Skills	Online Meeting	APAFRI & NIFoS
14	3-5 December 2025	The Fifth Steering Committee Meeting of SANFRI and The Fourth Early Career Academics Forum	Kuala Lumpur, Malaysia	APFNet, FRIM & APAFRI

Membership Fee

APAFRI Constitution : Article VII

Members whose dues are not paid for more than 12 months are deemed to be in default and shall not enjoy the membership benefit until the subscription is fully paid.

Membership fee invoices will be issued via email in **January 2026**.

Once payment is made, please inform us and provide the transaction date so we can update our records. Kindly ensure you have received the official receipt from the Secretariat for your payment.



Every step of APAFRI's 2025 journey was made possible by your support, participation and contributions. Together, we look ahead to a year filled with happiness and meaningful collaboration. Warm wishes for a joyful festive season and a Happy New Year.

The APAFRI Newsletter is compiled by the Secretariat. Your comments, articles and/or suggestions are gratefully received.

Contact us:

APAFRI Secretariat
Forest Research Institute Malaysia
Kepong, 52109 Selangor
Malaysia

Email: secretariat.of.apafri@gmail.com
Website: www.apafri.org

Acknowledgements

APAFRI extends its thanks to the followings for their continuous support:

- ❖ Forest Research Institute Malaysia (FRIM)
- ❖ National Institute of Forest Science (NIFoS), Republic of Korea
- ❖ Asia-Pacific Network for Sustainable Forest Management and Rehabilitation (APFNet)